



# FITMENT INSTRUCTIONS

## DRAWER FITMENT

### TOOLS REQUIRED:

- 8 Spanner
- 13 Spanner
- 3 Allen key

### TO FIT

Please use the images as a reference to help you fit the Awning to load bar brackets.

**1.** Open the Drawer Box and unwrap carefully, to ensure no cuts on the box whilst unwrapping.

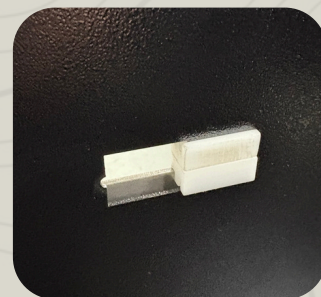
**2.** Use the slam lock to unlock the drawer by pulling up on the lock to open it completely



**3.** Loosen the M5 Nut on the inside of the drawer and remove the stopper plates that were fastened by using an 8mm Spanner and a 3mm allen key.



**4.** Remove the four stopper plates on the side of the drawers. Thereafter, take out the inner parts of the drawers by sliding the bushing towards the opening.



**5. Drill** out holes with an 8mm drill bit, by using the existing mounting holes on the inside of the drawer as a stencil to mark out where to drill.

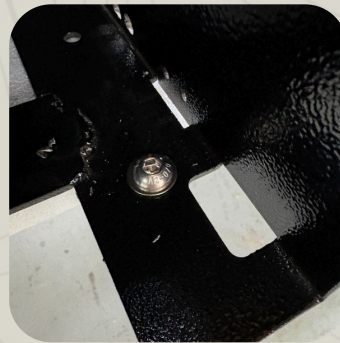
**6.** Insert the M8 bolts through the existing mounting holes in the drawer and mounting holes in the mounting surfaces.

**7.** Tighten the bolts and insert the bushing into the opening, and then insert the stopper plate and tighten.

**8.** Fasten all bolts, and ensure the drawers open and close easily.



Marking of holes

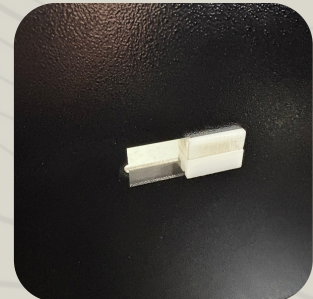


Inserting & Fastening

---

**9. Re-inserting the drawer inner:**

Use the acetol bushes you have removed and insert them in the open cavities.



**10.** When your acetol bushes are in place insert your fastening plate and fasten tighten with your m5 bolt and nut.



PLEASE DON'T HESITATE TO CONTACT US IF YOU NEED ANY SUPPORT REGARDING THE FITMENT.  
THANK YOU FOR YOUR SUPPORT, WE HOPE YOU LOVE YOUR QUICK PITCH PRODUCT.